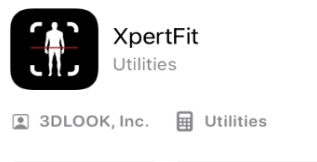


EXPERFIT

A Touch-less Method of Capturing Measurements

1) Download APP to your phone / Xperfit Utilities

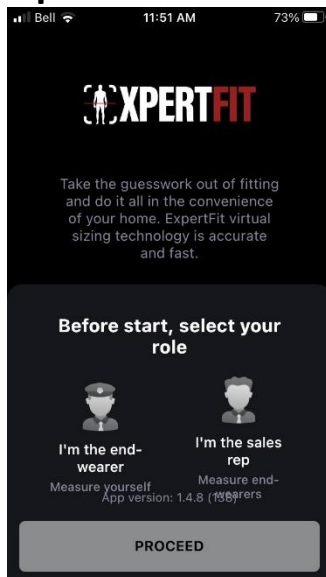


2) Contact PSP Customer Service to set up a measuring event.

3) The Administrator from PSP will send you an email.

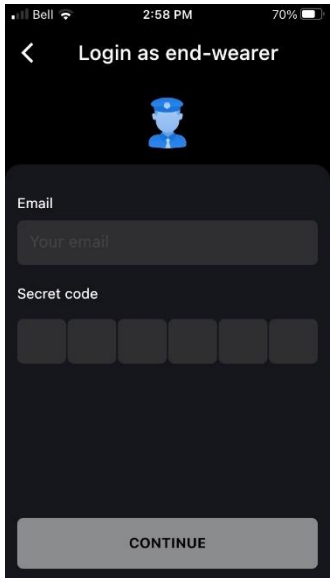
4) Your email from PSP will contain the Secret Code to use.

5) Open APP



6) Click on I'm the end wearer / Click Proceed.

**7) Enter your email address and the Secret Code.
Click Continue.**

A screenshot of a mobile application interface. At the top, the status bar shows 'Bell', '2:58 PM', and '70%' battery. The app header is dark with a white back arrow and the text 'Login as end-wearer'. Below the header is a blue icon of a person wearing a uniform. The main content area has a dark background with two input fields: 'Email' with a placeholder 'Your email' and 'Secret code' with six empty boxes. At the bottom is a grey button labeled 'CONTINUE'.

8) Follow the directions the APP will give you.

9) Once you have hit complete, the information will automatically be sent to the Administrator.

10) If you require your size on your purchase order, Customer Service will send you an email with the size.

11) For multiple sizing, each officer must have an email address and have downloaded the APP on their phone.

HELPFUL HINTS for using the XPERTFIT APP

- 1) It is very important to enter the correct height and weight.**
- 2) Shoes only – No Heels**
- 3) Wear snug clothing, preferably tuck in your shirt.**
- 4) Be aware of the contrast in the clothing you are wearing vs the background. Same color / shade may interfere with the accuracy of measurements.**
- 5) Do not wear a duty belt or any type of phone holder.**
- 6) Do not wear any type of hat.**
- 7) No bulky pockets, please empty out pockets.**
- 8) Long hair must be tied back in a ponytail.**